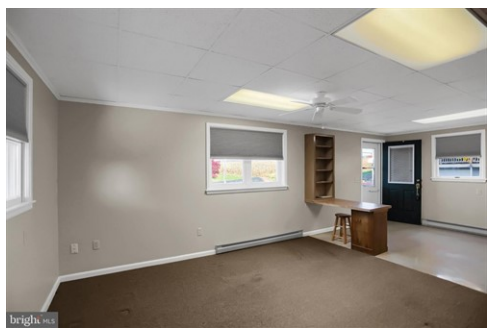




\$ 184,900



3526 Route 25, Millersburg, PA 17061

- » Beds: 2 | Baths: 2 Full
- » MLS #: PADA2039102
- » Single Family | 1,296 ft<sup>2</sup> | Lot: 17,860 ft<sup>2</sup>
- » More Info: [3526Route25.IsForSale.com](https://3526Route25.IsForSale.com)



Mandy Carl  
Agent/Broker/Owner

(717) 362-4663 (MAIN)

(717) 905-2369 (FAX)

[info@magnoliarealtyservices.com](mailto:info@magnoliarealtyservices.com)

<https://mandycarl.unitedcountryagents.com/index.html>



United Country Real Estate | Magnolia Realty Services

30 West Main St.

Elizabethville, PA 17023

(717) 362-4663

Come see this well-maintained, ease of living ranch in the country of Mifflin Township along Route 25. 2 bed, 2 full baths with nice kitchen and large baths. One step up in back to bedroom areas along with smaller family room area with hearth ready to possibly add a supplemental heat source again. Ample storage with built in small garden shed inside of carport, and attached back sheds with coal stove perfect for the handy person who needs workshop and storage. Exterior is easily maintainable, and plenty of parking for all your guests. This home is perfect for downsizing and/or just starting out. Schedule to see this home today.

